



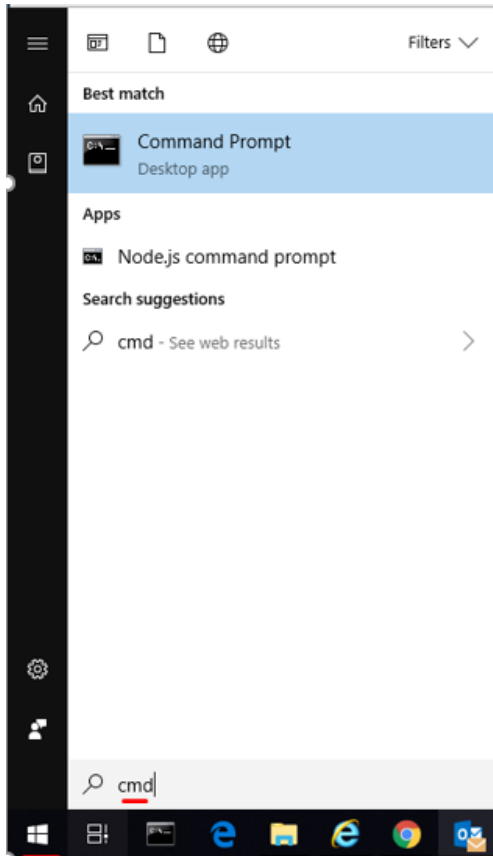
# Run Commands

---

# RUN COMMAND GUIDE

## MICROSOFT WINDOWS

1. Open the Windows menu
2. Search '**CMD**'
3. Right click and '**Run as Administrator**'

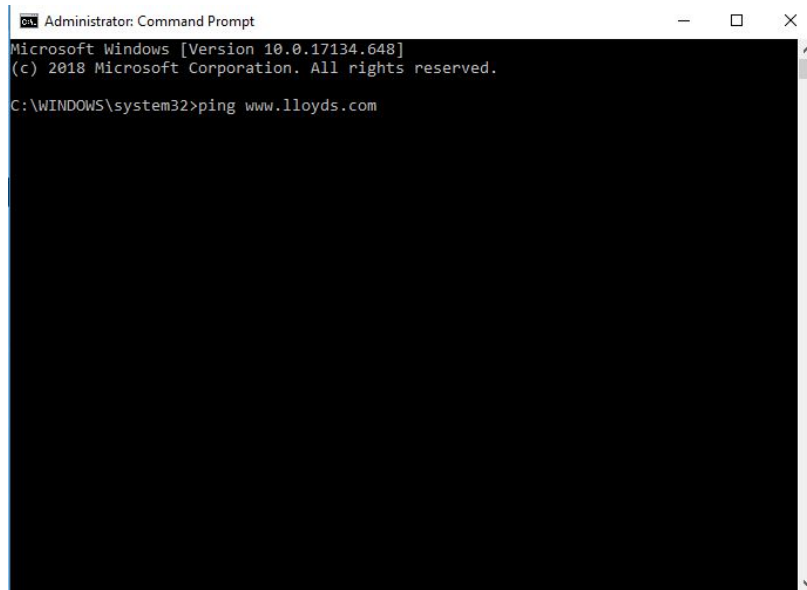


In order for us to proceed with the analysis, we would need the output from the following commands:

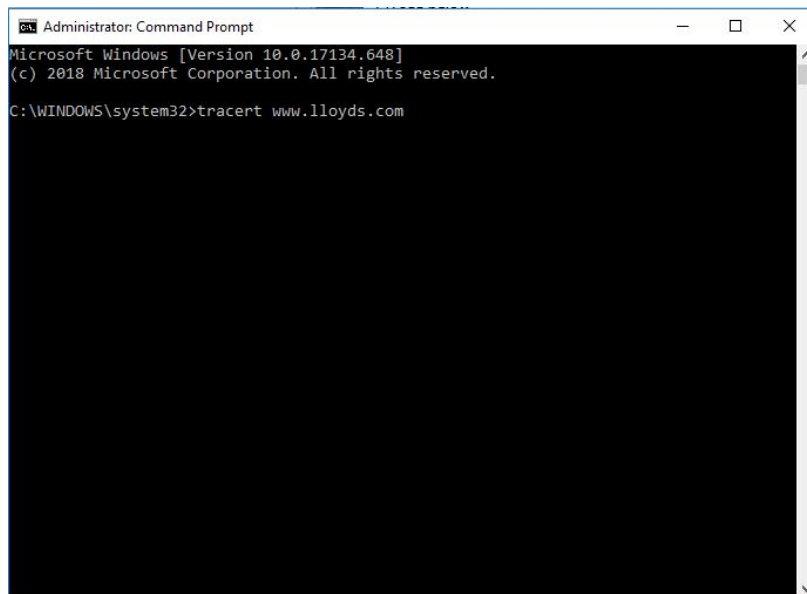
- ipconfig /all (record the results)
- ping <website> (record the results)
- tracert <website> (record the results)
- nslookup <website> (record the results)

```
Administrator: Command Prompt
Microsoft Windows [Version 10.0.17134.648]
(c) 2018 Microsoft Corporation. All rights reserved.
C:\WINDOWS\system32>ipconfig /all
```

```
Administrator: Command Prompt
Microsoft Windows [Version 10.0.17134.648]
(c) 2018 Microsoft Corporation. All rights reserved.
C:\WINDOWS\system32>nslookup www.lloyds.com
```



```
Administrator: Command Prompt
Microsoft Windows [Version 10.0.17134.648]
(c) 2018 Microsoft Corporation. All rights reserved.
C:\WINDOWS\system32>ping www.lloyds.com
```

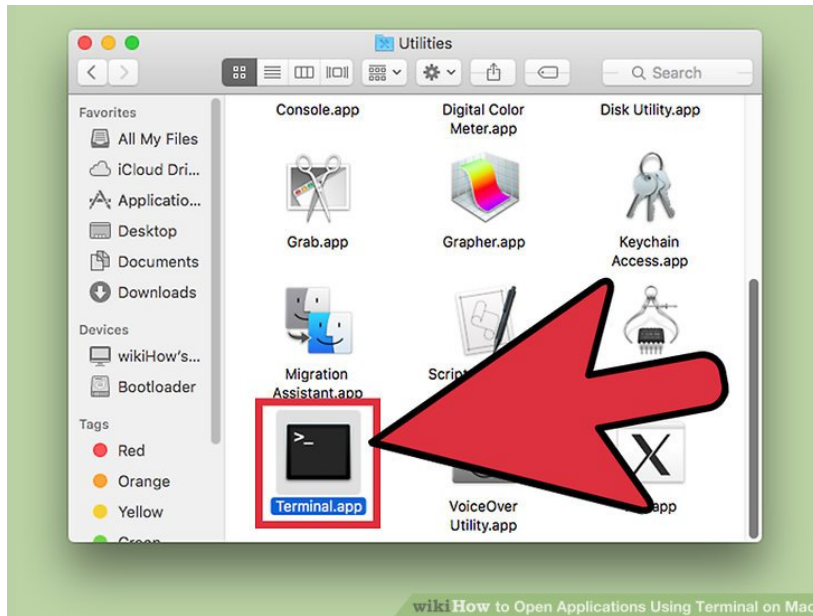


```
Administrator: Command Prompt
Microsoft Windows [Version 10.0.17134.648]
(c) 2018 Microsoft Corporation. All rights reserved.
C:\WINDOWS\system32>tracert www.lloyds.com
```

Please record the results from all the requested steps and email them across so we can investigate further.

## OSX APPLE/LINUX

1. Open **'Finder'**
2. And navigate to the **'Applications folder'**
3. Open the **'Utilities'** folder
4. Open **Terminal.app**



In order for us to proceed with the analysis, we would need the output from the following commands:

- Ifconfig (record the results)
- ping <website> (record the results)
- traceroute <website> (record the results)
- nslookup <website> (record the results)

Please record the results from all the requested steps and email them across so we can investigate further.